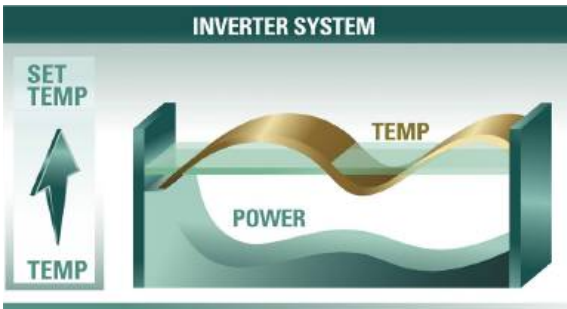
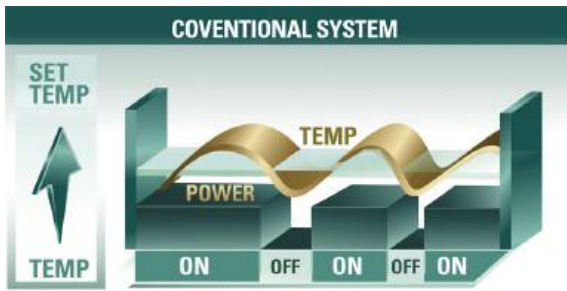


QUANTUM HYPER

Ductless Heat Pump Mini Split System

- Up to 25 SEER2 Efficiency
- DC Inverter Technology
- Heat Pump and AC Operation
- Wifi included
- Self-Diagnosis
- AHRI and EnergyStar Rated
- Ultra Heat down to -22°F
- 4-Way air flow
- Multiple fan speeds
- Intelligent defrost
- Low voltage start-up
- Intelligent preheating
- 4-in-1 Healthy Filter
- Sleep mode
- Timer mode
- Privacy lock mode
- Turbo Mode
- Quiet Operation



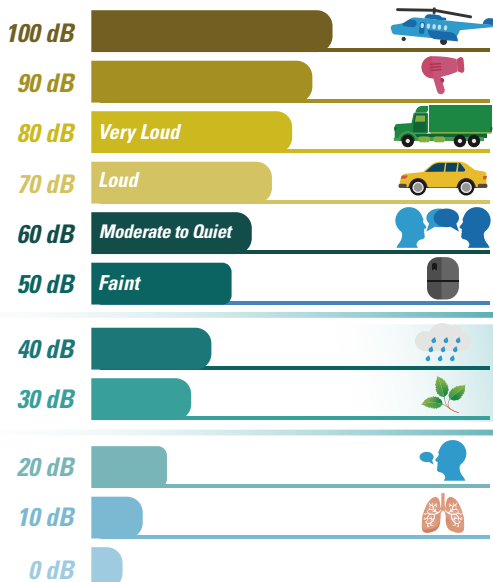
Why go Inverter?

The key difference between an inverter and non-inverter air conditioner is that an inverter system can regulate the speed of its compressor and motor. Once the room is cool, inverter technology reduces the speed of the motor and refrigerant used to cool the area, thus saving on energy.

In comparison, non-inverter motors only runs at full speed. The motor runs at full speed and turns off once room temperature drops to the desired level. This repeated on-off process can produce unnecessary noise and consume more energy.

Saves up to 30% on your utility bill

Since mini-splits require no ducting, they forego those energy losses typically associated with conventional central systems. Ducts not properly sealed or unconditioned spaces such as attics, crawlspaces, or poorly insulated rooms can account for more than 30% of loss energy consumption, leading to a more expensive utility bill.



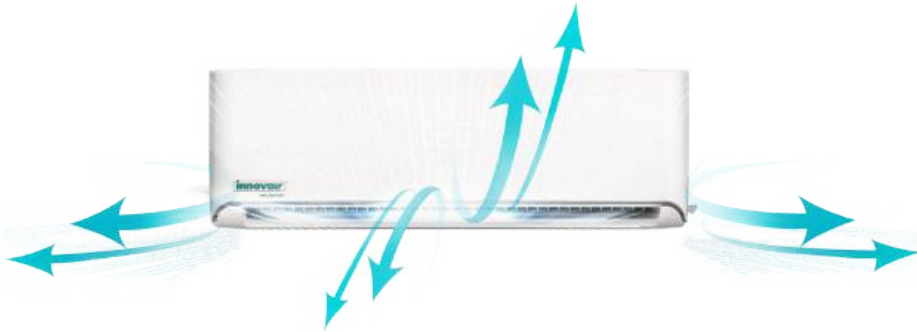
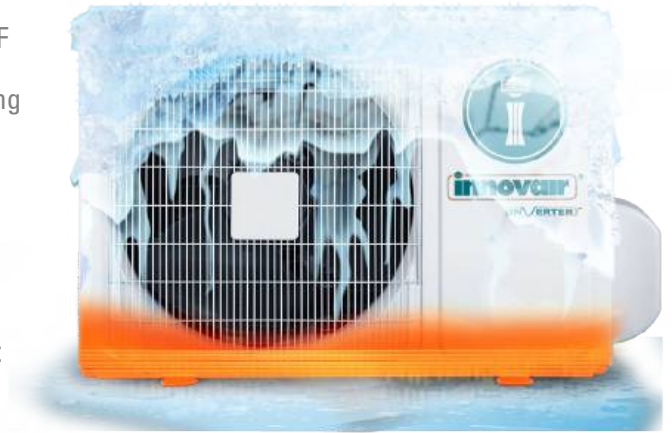
A Quiet Option

With inverter technology, the indoor unit will continuously run at adjusted speeds, eliminating the loud start-up conventional air conditioning systems require.

This comfort will allow a flexible installation in areas that will not interrupt day-to-day activities with unnecessary noise pollution.

Condenser Features

- Ultra heating capable of operating in outside temperature of -22 °F
- Ultra high efficiency up to **25 SEER2** cooling and **10.5 HSPF2** heating
- Advanced inverter compressor provides faster response to reaching comfort temperatures
- Low voltage startup helps operate system from 187V to 253, adapting to unstable power suppliers
- **Saving energy by using Intelligent Defrost. Helps monitor the frost build up on coil surface**
- Self-Diagnostic built-in computer which uses real-time diagnostics which helps prolong the unit's life and alerts users with simple error codes the system may be having.



Wall Mount Features

- **4-Way** airflow allows for **Vertical and Horizontal auto swing**
- Ultra-Quiet indoor operations with inverter technology
- Wide angle air guides enable a full 180° swing up and down for superior air distribution
- High efficiency grooved copper tubes
- 4 in 1 healthy filters includes HEPA, Vitamin C, Silver Ion, and Catechin

Control Features

- Multi-functional wireless remote control with large LCD display
- "I FEEL" mode can sense the room temperature from the remote control, adjusting to your locations comfort
- **Wifi Access to control your system away from your system's location. Compatible with Amazon Alexa and Google Home.**
- Sleep Mode allows the unit to automatically adjust room's temperature at low sound levels
- Available displays in °F or °C



SPECIFICATIONS

Model		WIN09H7H51	WIN12H7H51	WIN18H7H51	WIN24H7H51
AHRI Certified Reference Number		208286573	208286574	208286575	208286577
Power Supply		Ph-V-Hz 208-230V~ 60Hz, 1Ph	208-230V~ 60Hz, 1Ph	208/230V,1Ph,60Hz	208-230V~ 60Hz, 1Ph
Cooling	Capacity: Rated (Min/Max)	Btu/h 9000 (3000~12000)	12000 (3000~14000)	18000(4500~20000)	24000 (5500~25000)
	Input	W 620	940	1360	1920
	Rated Current	A 2.8	4.3	6,0	8.5
	EER2	Btu/w 14.5	12.7	13.2	12.5
	SEER2	Btu/w 25.5	23.5	20.5	21
Heating at 47°F	Capacity: Rated (Min/Max)	Btu/h 10000 (3000~14000)	12000 (3000~16000)	18000 (5500~23000)	24000 (6000~27000)
	Input	W 720	940	1620	2500
	Rated Current	A 3.2	4.3	7.2	11.2
	COP	W/W 4.07	3.74	3.51	3.05
	HSPF2	Btu/w 10.5	9.5	9.5	10
Heating Capacity at 5°F as calculated by M1 (AHRI)		Btu/h 7000	8400	13300	18200
Heating Capacity Ratio @ 5°F		% 70%	70%	70%	70%
Heating COP at 5°F as calculated by M1 (AHRI)		COP 2.05	2.05	1.85	1.75
Minimum Circuit Ampacity		A 9	9	18	20
Maximum Fuse		A 15	15	25	30
Compressor	Model	EASN108D22UFZ	EASN108D22UFZ	EATM240D57UMT	EATF250D22UMT
	Type	ROTARY	ROTARY	ROTARY	ROTARY
	Brand	GMCC	GMCC	GMCC	GMCC
Indoor Air Flow (H/M/L)		CFM 365 / 306 / 253	377 / 324 / 253	559 / 470 / 382	706 / 647 / 559
Indoor Noise Level (H/M/L)		dB(A) 39 / 35 / 32	40 / 36 / 32	45 / 39 / 35	50 / 47 / 42
Indoor Unit	Dimension(W*D*H)	inch 35 ¾ x 10 ½ x 8 ¼	35 ¾ x 10 ½ x 8 ¼	46 ½ x 12 ½ x 9	50 ½ x 14 ¼ x 10 ¼
	Packing (W*D*H)	inch 39 ½ x 13 ¼ x 10 ¼	39 ½ x 13 ¼ x 10 ¼	48 ½ x 15 ½ x 12 ½	54 ½ x 17 x 12 ¾
	Net/Gross Weight	lbs. 19/23	19/23	30/35	40/50
Outdoor Air Flow		CFM 1120	1120	1382	2355
Outdoor Noise Level		dB(A) 53	53	58	58
Outdoor Unit	Dimension(W*D*H)	inch 32 x 11 x 23	32 x 11 x 23	34 x 12 ¼ x 25 ½	35 ½ x 13 ½ x 29 ½
	Packing (W*D*H)	inch 37 x 15 ¼ x 25 ¼	37 x 15 ¼ x 25 ¼	39 ¼ x 17 ½ x 28 ¾	41 ¾ x 17 ¾ x 32 ½
	Net/Gross Weight	lbs. 73/79	73/79	101/110	132/141
Design Pressure		PSIG 550/340PSIG	550/340PSIG	550/340PSIG	550/340PSIG
Refrigerant Piping	Liquid Side - Gas Side	inch 1/4" - 3/8"	1/4" - 3/8"	1/4" - 1/2"	3/8" - 5/8"
	Max. Refrigerant Pipe Length	ft 66	66	66	66
	Max. Difference In Level	ft 33	33	33	33
Thermostat Type		Remote Control and Wifi (Wired Control Optional)			
Operation Temperature	Indoor (Cooling/Heating)	°F 62 ~ 90 / 32 ~ 86			
	Outdoor (Cooling/Heating)	°F 5 ~ 115 / -22 ~ 75			
Application Area (Cooling Standard)		sq.ft 97-172	129-189	258-344	344-505

*Specifications are subject to changes without notice. ** Model numbers, pictures, and specifications of all products are subject to change without further notice.

ACCESSORIES INCLUDED

- 16 FT Installation Kit
- Wifi pre-installed
- Drain hose
- 4-in-1 Healthy Filter (Vitamin C, Silver ion, HEPA, Catechin)
- Installation and User Manuals
- LCD Remote Control

Innovative Ideas in Air Conditioning

