



innovair

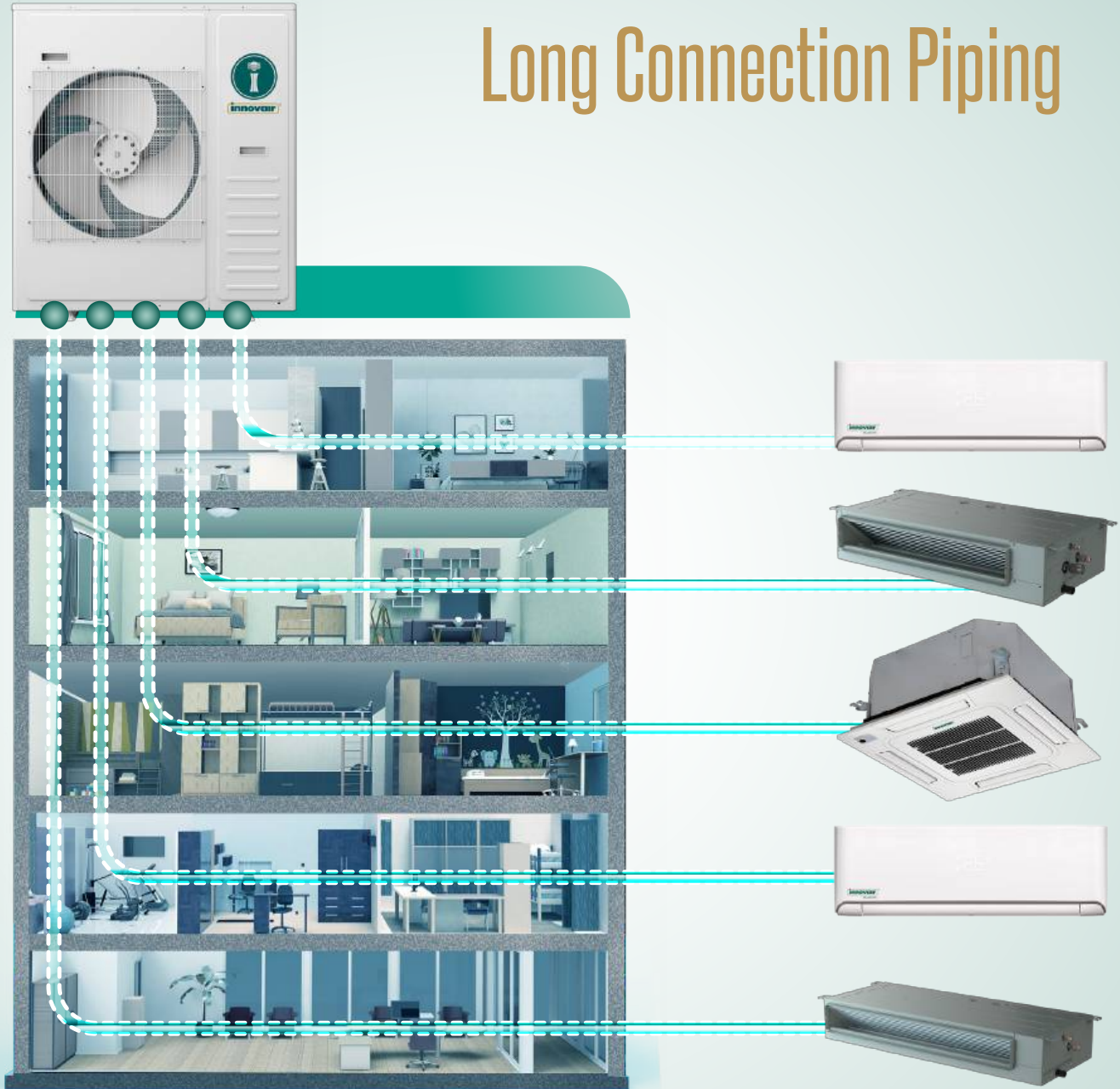


MULTI INVERTER

Heat and cool multiple living spaces



Long Connection Piping



Outdoor Size	Max Piping Length to Each IDU (Ft)					Max Total Piping Length (FT)
	A	B	C	D	E	
18K / 2 Pipe	82	82				164
24K / 3 pipe	66	66	66			198
36K / 4 Pipe	66	66	66	66		246
42K / 5 Pipe	66	66	66	66	66	262



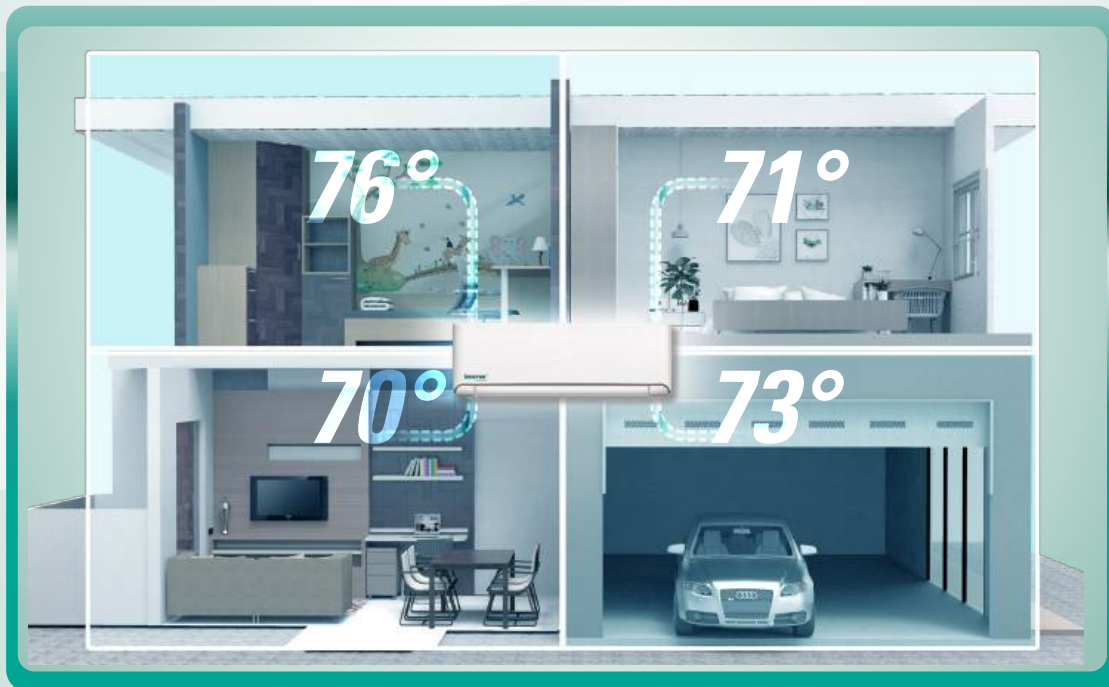
Hyper Heat

*Hyper Heat assures consistent comfort specialized for extreme climates. Condenser heat output capacity allows the unit to work efficiently as a primary heat source, even when temperature drops to -13°F**

*VOM42H7R5 works as low as -4°F

Multiple Rooms

Heat or cool multiple areas with only one outdoor unit. Each area can be controlled independently for optimal comfort



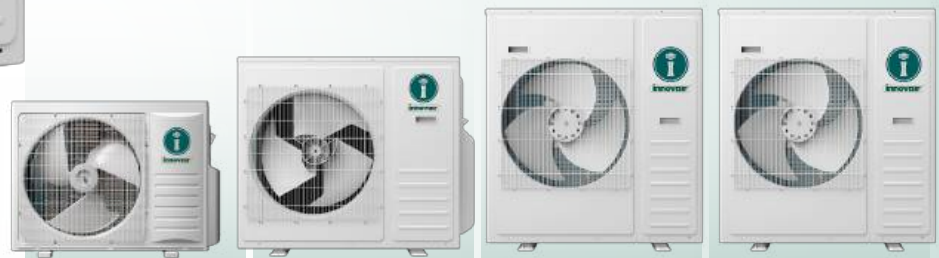
Up to **22 SEER2** EFFICIENCY

Highly efficient operation allows for savings without sacrificing comfort. Applicable for many local rebate programs.

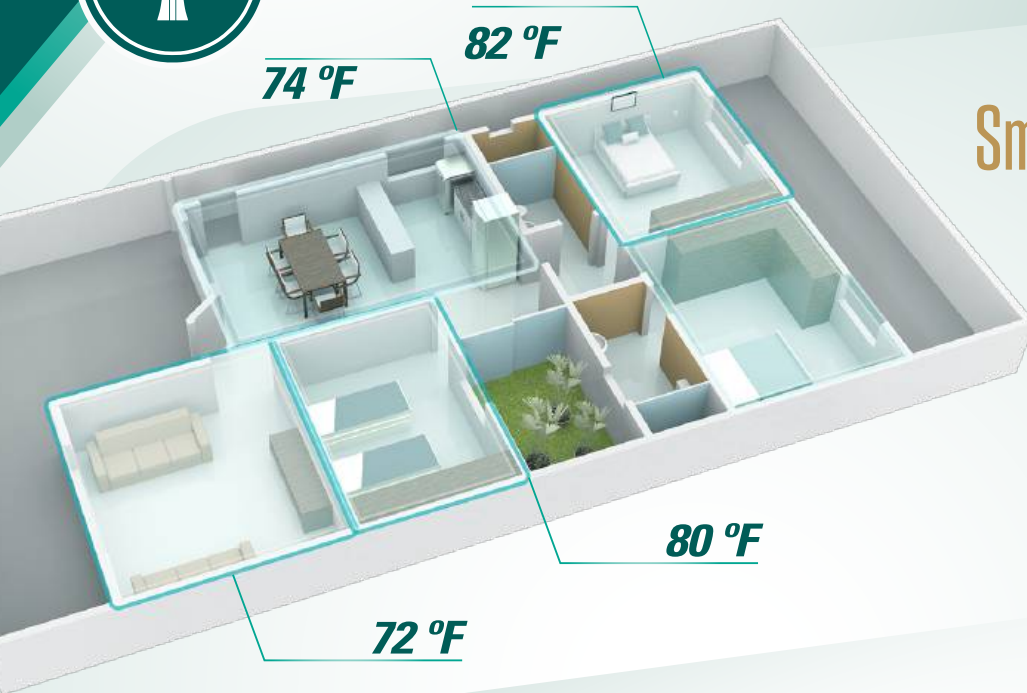




OUTDOOR UNIT



Model Name			VOM18H7R2P7	VOM24H7R3P7	VOM36H7R4P7	VOM42H7R5P7	
AHRI Certificate (Ducted / Non-Ducted / Mix)			207821947 / 8 / 9	207821950 / 1 / 2	207821953 / 4 / 5	207821956 / 7 / 8	
Connections			up to 2 indoor units	up to 3 indoor units	up to 4 indoor units	up to 5 indoor units	
Power			V/Hz/f	208/230 50/60 1	208/230 50/60 1	208/230 50/60 1	
Capacity	Cooling Rated	95 °F	Btu/h	18000	24000	32000	42000
		47 °F	Btu/h	18000	24000	36000	42000
	Heating Rated	5 °F	Btu/h	18000	24000	36000	36000
		95 °F	Btu/h	18000(7500~24000)	24000(8000~30200)	32000(12000~42000)	42000(9000~50000)
Cooling Range	47 °F	Btu/h	18000(5800~28700)	24000(5200~37000)	36000(8000~52000)	42000(9000~52000)	
	47 °F	Btu/h	18000(5800~28700)	24000(5200~37000)	36000(8000~52000)	42000(9000~52000)	
Heating Capacity Ratio		5 °F	%	100%	100%	100%	85%
EER2		95 °F	Btu/(W•h)	12,5	12,5	12,5	10,5
COP (Calculated by M1)		5 °F	W/W	1,84	1,84	1,84	1,84
SEER2			Btu/(W•h)	21	22	21	20
HSPF2			Btu/(W•h)	9,5	9,05	9,0	8,95
Guaranteed Operating Range	Cooling		°F	14~114.8	14~114.8	14~114.8	14~114.8
	Heating		°F	-13~75.2	-13~75.2	-13~75.2	-4~75.2
Power input	Cooling	95 °F	W	1440(510~2610)	1920 (420 ~2640)	2550(690~5010)	4020(660~5550)
	Heating	47 °F	W	1530(450~3510)	1920 (420 ~4020)	3120(600~6000)	3870(540~6450)
Rated current	Cooling	95 °F	A	6.5	8,7	11	17,5
	Heating	47 °F	A	6.9	8.7	13	17
Air Flow			CFM	1850	2350	3411	3411
Noise Level			dB(A)	55	59	59	63
Piping Connections	Diameter(Liquid)		inch	1/4	1/4	1/4	1/4
	Diameter(Gas)		inch	3/8	3/8	3/8	3/8
	Max Length(Each)		ft	82	66	66	66
	Max Length(Total)		ft	164	197	246	262
	Max Height		ft	49	49	49	49
Compressor	Type			ROTARY	ROTARY	ROTARY	ROTARY
Refrigerant Type				R410A	R410A	R410A	R410A
Refrigerant Charge			oz	63.49	81.13	105.82	120
Additional refrigerant			oz/ft	0.161oz/ft over 49ft	0.161oz/ft over 74ft	0.161oz/ft over 98ft	0.161oz/ft over 123ft
Net Dimension (WxHxD) (WxDxH)			inch	33-7/8x26-3/8x12-1/4	37-3/8x33x13-3/8	37-3/8x41-3/8x13-3/8	37-3/8x41-3/8x13-3/8
Net Weight			lbs	116.8	158.7	188.5	198.4
Package Dimension (WxDxH)			inch	39x17-3/4x28-3/4	43-3/4x18-1/8x36-1/4	43-3/4x18-1/8x47-1/4	43-3/4x18-1/8x47-1/4
Gross Weight			lbs	125.6	169.5	220.5	224.5

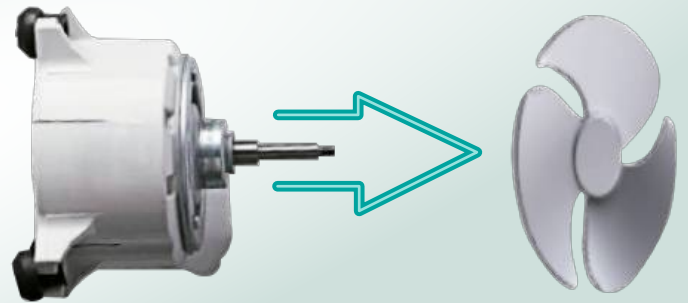


Smart Control Thechnology

Automatic distribution of refrigerant to each indoor unit to balance the cooling or heating capacity for each room. This allows better comfort at different desired temperatures.

16 Level DC Motor

Brushless DC technology motor is 30% more efficient than traditional motors. Allows for a smoother start-up in operation, creating lower noise levels.



Mix and Match

Mix and match different types of indoor units which include high wall mounts, cassettes, or ducted units.





HIGH WALL



4-WAY AIRFLOW

4-Way Air Flow allows for air movement in horizontal or vertical position for complete area coverage

WIFI CAPABLE

Control your Innovair system from anywhere with wifi access. The system will respond to multiple features from any iOS or Android device, allowing you complete control when away.

*Select systems are compatible with Amazon Alexa and Google Home.



SLEEP MODE

One click to limit the maximum frequency current while still maintain the room temperature within the optimal temperature, guarantee a cool night sleep with maximum energy saving.

Model Name		VWM08H7F7	VWM10H7F7	VWM13H7F7	VWM18H7F7	VWM24H7F7
Cooling capacity	Btu/h	7000	9000	12000	18000	23400
Heating capacity	Btu/h	7500	9500	13000	19000	26000
Power	V/Hz/f	208/230 50/60 1	208/230 50/60 1	208/230 50/60 1	208/230 50/60 1	208/230 50/60 1
Output power	W	25	25	25	35	35
Rated current	A	0.11	0.11	0.11	0.17	0.17
Degrees of protection		IPX0	IPX0	IPX0	IPX0	IPX0
Air flow	CFM	341	341	365	647	706
Noise Level (Sound Pressure)	dB(A)	39/35/30	39/35/30	39/35/30	45/41/37	47/45/42
Net Dimension (WxHxD)	inch	37 3/8 x 10 3/4 x 8 1/8	37 3/8 x 10 3/4 x 8 1/8	37 3/8 x 10 3/4 x 8 1/8	48 x 12 5/8 x 9 1/4	48 x 12 5/8 x 9 1/4
Package Dimension (WxHxD)	inch	39 3/8 x 13 3/16 x 6 3/8	39 3/8 x 13 3/16 x 6 3/8	39 3/8 x 13 3/16 x 6 3/8	51 3/4 x 15 7/16 x 12 1/2	51 3/4 x 15 7/16 x 12 1/2
Net/Gross Weight	lbs	19.8 / 24.3	19.8 / 24.3	19.8 / 24.3	32.0 / 37.5	32.0 / 37.5
Diameter(Liquid)	inch	1/4	1/4	1/4	1/4	3/8
Diameter(Gas)	inch	3/8	3/8	3/8	1/2	5/8

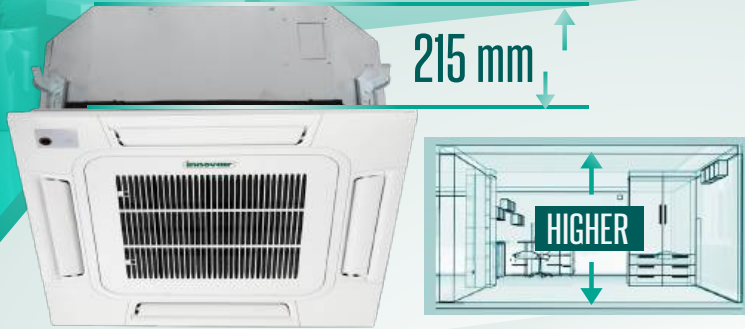


CASSETTE



COMPACT DESIGN

Slim design with body thickness of 8.5 inches (215mm) and the installation thickness of 9.6 inches (245mm) reducing the ceiling height requirement.



360° Round Flow

360° Round Flow offers optimum efficiency and comfort with a full-flat panel and micro-channel design allowing smooth air supply.



FRESH AIR INTAKE

Fresh air intake introduces outdoor fresh air into the room to improve air quality.

Model Name		VCM10H7F7	VCM13H7F7	VCM18H7F7	VCM24H7F7
Cooling capacity	Btu/h	9000	12000	18000	24000
Heating capacity	Btu/h	10200	13500	19000	27000
Power	V/Hz/f	208/230 50/60 1	208/230 50/60 1	208/230 50/60 1	208/230 50/60 1
output power	W	57	57	80	80
Rated current	A	0.25	0.25	0.40	0.40
Anti electric shock		Class I	Class I	Class I	Class I
Degrees of protection		IPX4	IPX4	IPX4	IPX4
Air flow	CFM	306	353	559	647
Noise Level (Sound Pressure)	dB(A)	38/34/31	42/37/33	38/36/34	44/40/38
Net Body Dimension (WxHxD)	inch	22 7/16 x 8 7/16 x 22 7/16	22 7/16 x 8 7/16 x 22 7/16	33 x 9 3/4 x 33	33 x 9 3/4 x 33
Net Panel Dimensions (WxHxD)	inch	24 1/2 x 1 5/8 x 24 1/2	24 1/2 x 1 5/8 x 24 1/2	37 1/2 x 1 3/4 x 37 1/2	37 1/2 x 1 3/4 x 37 1/2
Package Dimension (WxHxD)	inch	28 3/4 x 11 1/2 x 26 5/16	28 3/4 x 11 1/2 x 26 5/16	39 1/4 x 37 1/16 x 14 9/16	39 1/4 x 37 1/16 x 14 9/16
Net/Gross Body Weight	lbs	32.0 / 38.5	34.0 / 40.5	56.0 / 74.0	59.5 / 79.5
Diameter(Liquid)	inch	1/4	1/4	1/4	3/8
Diameter(Gas)	inch	3/8	3/8	1/2	5/8

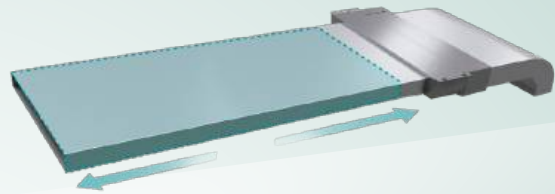


DUCT TYPE



HIGH STATIC DUCT

External static pressure up to a maximum of 0.022 Psig (150Pa) makes unit applicable for a wide range of building types

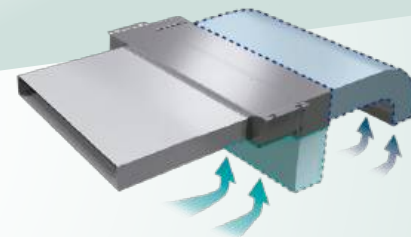


SLIM DESIGN

The slim duct unit with a thickness of only 7.5in (190mm), makes it applicable for narrow ceiling spaces. The external static pressure of up to 0.007psig (50Pa) facilitates unit use with flexible ducts of varying lengths

FLEXIBLE INSTALLATION

Air suction direction can be altered from rear to bottom suction, giving a choice between free use and connection to option suction grilles.



Slim Duct Indoor Unit		VTM10H7C7	VTM13H7C7	VTM18H7C7	VTM24H7C7
Nominal Capacity - Cooling	Btu/h	8,500	12,000	15,000	24,000
Nominal Capacity - Heating	Btu/h	10,000	13,000	19,000	27,000
Power Supply	Ph/V/Hz	1Ph/208~230V/60HzV	1Ph/208~230V/60Hz	1Ph/208~230V/60Hz	1Ph/208~230V/60Hz
Airflow- H/M/L	CFM	265/175/150	395/235/180	415/353/295	590/445/325
External Static Pressure	Pa	0~10	0~10	0~10	0~15
Moisture Removal	L/Hr	0.8	1.4	1.8	2.0
Sound Pressure Level - H/M/L	db (A)	37/31	39/32	41/33	42/43
Unit Dimension (WxHxD)	inches	27 ½ x 24 x 8	27 ½ x 24 x 8	35 ½ x 24 x 8	43 ½ x 24 x 8
Package Dimension (WxHxD)	inches	35 x 29 x 12	35 x 29 x 12	44 x 29 x 12	52 x 29 x 12
Net/Gross Weight	lbs	48.5/60	51/64	60/79	68/90
Piping Connections (Gas/Suction)	inches	3/8	3/8	1/2	5/8
Piping Connections (Liquid)	inches	1/4	1/4	1/4	3/8

Outdoor Model	Outdoor Connections	Combination Allowance					
		Two Units	Three Units		Four Units	Five Units	
VOM18H7R2P7	2 Pipe	07+07					
		07+09					
		07+12					
		09+09					
		09+12					
		12+12					
VOM24H7R3P7	3 Pipe	07+18	07+07+07	07+12+12			
		09+18	07+07+09	07+12+18			
		12+12	07+07+12	09+09+09			
		12+18	07+07+18	09+09+12			
		18+18	07+09+09	09+09+18			
			07+09+12	09+12+12			
			07+09+18	12+12+12			
VOM36H7R4P7	4 Pipe		07+09+18	09+12+12	07+07+07+07	07+09+12+12	
			07+09+24	09+12+18	07+07+07+09	07+09+12+18	
			07+12+12	09+12+24	07+07+07+12	07+09+12+24	
			07+12+18	09+18+24	07+07+07+18	07+12+12+12	
			07+12+24	12+12+12	07+07+07+24	07+12+12+18	
			07+18+24	12+12+18	07+07+09+09	09+09+09+09	
			09+09+12	12+12+24	07+07+09+12	09+09+09+12	
			09+09+18	12+18+24	07+07+09+18	09+09+09+18	
			09+09+24		07+07+09+24	09+09+09+24	
					07+07+12+12	09+09+12+12	
					07+07+12+18	09+09+12+18	
					07+07+12+24	09+09+12+24	
					07+09+09+09	09+12+12+12	
					07+09+09+12	09+12+12+18	
					07+09+09+18	12+12+12+12	
			07+09+09+24	12+12+12+18			
VOM42H7R5P7	5 Pipe		7+18+24		7+7+7+7	7+9+18+24	7+7+7+7+7
			9+18+24		7+7+7+9	7+12+12+12	7+7+7+7+9
			12+18+24		7+7+7+12	7+12+12+18	7+7+7+7+12
					7+7+7+18	7+12+12+24	7+7+7+7+18
					7+7+7+24	7+12+18+24	7+7+7+9+9
					7+7+9+9	9+9+9+9	7+7+7+9+12
					7+7+9+12	9+9+9+12	7+7+7+9+18
					7+7+9+18	9+9+9+18	7+7+7+9+24
					7+7+9+24	9+9+9+24	7+7+7+12+12
					7+7+12+12	9+9+12+12	7+7+7+12+18
					7+7+12+18	9+9+12+18	7+7+9+9+9
					7+7+12+24	9+9+12+24	7+7+9+9+12
					7+7+18+24	9+9+18+24	7+7+9+9+18
					7+9+9+9	9+12+12+12	7+7+9+12+12
					7+9+9+12	9+12+12+18	7+7+12+12+12
					7+9+9+18	9+12+12+24	7+9+9+9+9
					7+9+9+24	9+12+18+24	7+9+9+9+12
					7+9+12+12	12+12+12+12	7+9+9+9+18
					7+9+12+18	12+12+12+18	7+9+9+12+12
					7+9+12+24		7+9+12+12+12
					9+9+9+9+9		
					9+9+9+9+12		
					9+9+9+9+18		
					9+9+9+12+12		
					9+9+12+12+12		

NOTE:

- If total load of indoor units exceeds nominal capacity of outdoor unit, the practical output capacity of every indoor unit will be attenuated correspondingly. This is most evident in heating mode.
- Combinations in chart have been pre-tested for operation verification. Combinations not listed may be possible, but have not been tested.



 **innovair**®

www.innovair.com