



innovative ideas in air conditioning

MULTI=MAX

**Multi-Room Ductless Splits
Heat Pump Inverter System**



76°

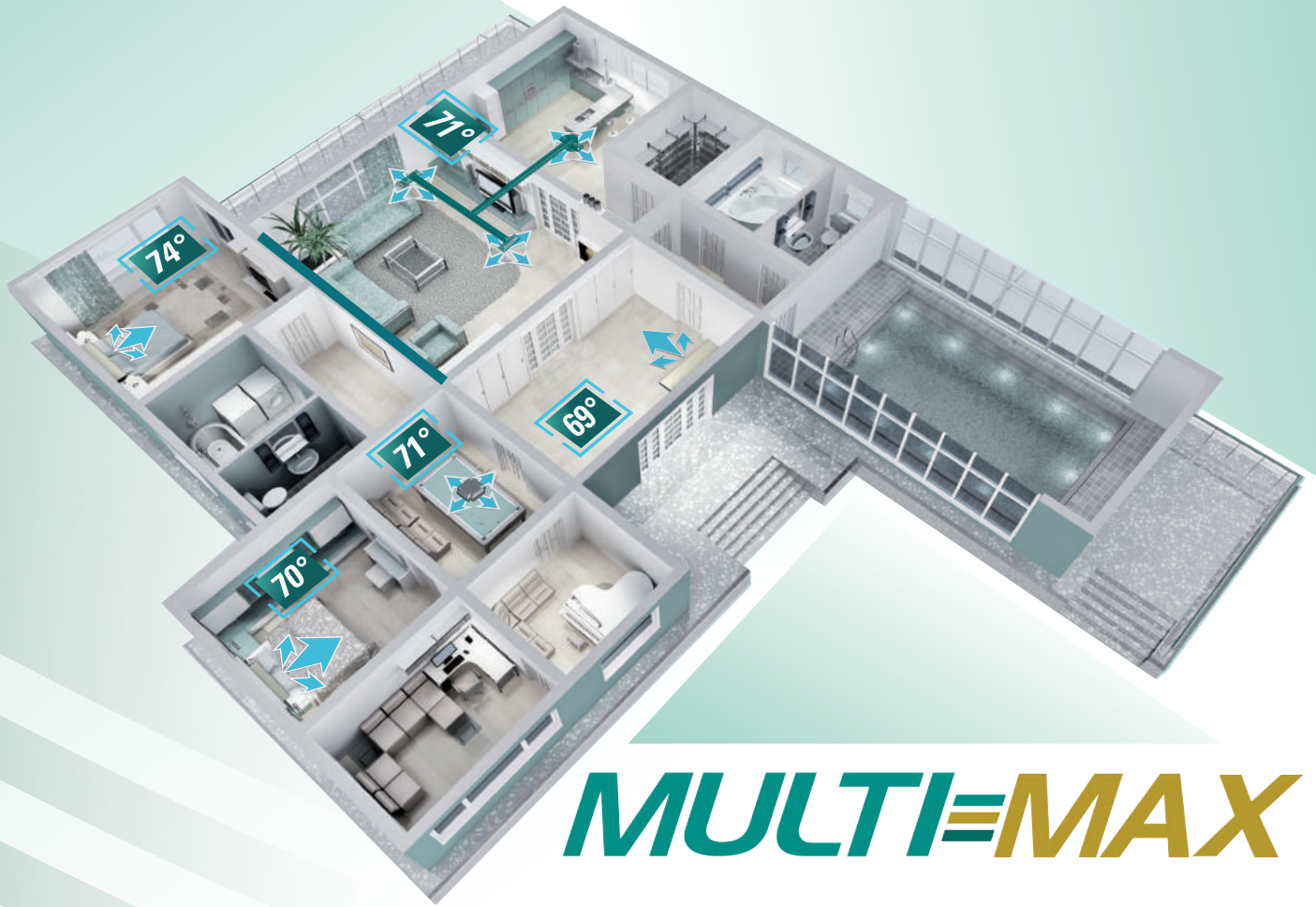


71°



73°





MULTI=MAX

Multi-Room Flexibility

- Multi-Max systems allow up to nine indoor units with one outdoor unit.
- Mix and Match with Wall Mount, Ceiling Cassette, Concealed Duct, and Universal Floor/Ceiling indoor units.
- Flexible piping connection from different directions for seamless installation

Energy Efficient Design

- AHRI rated Heat Pump System for ultimate savings
- Most advanced components such as Dual-Rotor Compressors and DC Brushless Fan Motors
- High efficiency Inner-grooved Copper tubing for increased heat exchanging performance

Strong Performance, Quiet Operation

- Optimized fan reduces the operation noise of the unit, providing comfortable indoor environment
- Optimized electrical sine wave to the compressor creates
 - Smoother motor rotation
 - Weakens compressor vibration
 - Lowers peak of pipe stress changes, creating lower sound levels during operation

Built to Last, Simple Maintenance

- Slit Type Gold Fin with Anti-Corrosion coating
- Heavy gauge rolled steel cabinets covered with durable powder coat finish
- Special service port for easier pressure detection and maintenance
- Unique design with built-in debugger, convenient for commissioning



MULTI=MAX

Multi - Max Inverter Heat Pump Condenser 18K - 42K BTU



Multi-Max units can heat and cool up to 5 zones without distribution boxes. Latest inverter technology saves energy, reduces outdoor noise and keeps room temperature steady by eliminating the harsh starts & stops of conventional systems. Each outdoor coil has a corrosion resistant Gold Fin coating to promote energy efficiency and prevent coil corrosion in corrosive environment.

- Heavy Gauge Steel Cabinet
- Indoor Master/Slave Settings
- Multipoint
- Diagnostics
- Sound Levels down to 56 DB
- No Refrigerant Distribution Boxes
- R410A Refrigerant
- Low Ambient Cooling down to 5 deg F

Outdoor Unit HP Inverter		VOM0522H7RE602	VOM0733H7RE603	VOM0833H7RE604	VOM0836H7RE605	VOM0847H7RE605
System Type		Heat Pump				
Cooling Capacity (Min-Max)	Btu/h	18,000 (7,000-21,000)	26,000 (7,500-33,000)	29,000 (7,500-34,000)	34,000 (9,000-36,000)	42,000 (9,000-46,000)
Heating Capacity (Min-Max)	Btu/h	19,000 (8,000-22,000)	29,000 (7,500-35,000)	30,500 (7,500-36,000)	36,000 (9,000-44,000)	45,000 (9,000-46,000)
Power Supply	Volt-Ph-Hz	208-230V-1Ph-50/60Hz				
Cooling Efficiency	SEER	22	21	21	21	21
Heating Efficiency	COP	12.5	12.7	12.7	12.7	11.8
Rated Current	Amps	12.4	20.2	16.8	30.0	30.0
Operation Ambient Range - Cooling	°F	0 ~ 118	0 ~ 118	0 ~ 118	0 ~ 118	0 ~ 118
Operation Ambient Range - Heating	°F	-4 ~ 86	-4 ~ 86	-4 ~ 86	-4 ~ 86	-4 ~ 86
Compressor Type		DC Inverter-driven Twin rotary				
Sound Pressure Level	db (A)	56	56	59	57	58
Unit Dimension (WxHxD)	inches	37 ½ x 27 ½ x 15 ½	38 ½ x 31 ¼ x 16 ¾	38 ½ x 31 ¼ x 16 ¾	42 ¾ x 43 ½ x 17 ¼	42 ¾ x 43 ½ x 17 ¼
Net Weight	lb	115	154	155	198	198
Condenser Coil type		Copper/Aluminum with GOLD FIN Coating				
Max # Indoor Units		2	3	4	5	5
Refrigerant / Charge	g	R410A / 1,600	R410A / 2,200	R410A / 1,2,800	R410A / 3,650	R410A / 3,650
Port Size (Liquid - Suction)	inches	1/4" - 3/8"	1/4" - 3/8"	1/4" - 3/8"	1/4" - 3/8"	1/4" - 3/8"
		1/4" - 3/8"	1/4" - 3/8"	1/4" - 3/8"	1/4" - 3/8"	1/4" - 3/8"
			1/4" - 3/8"	1/4" - 3/8"	1/4" - 3/8"	1/4" - 3/8"
				1/4" - 3/8"	1/4" - 3/8"	1/4" - 3/8"
					1/4" - 3/8"	1/4" - 3/8"
Pre-Charged Length	Ft	33	98	131	131	131
Additional Refrigerant charge/ft	Ft/g	20	20	20	20	20
Max Total Pipe Length	Ft	66	197	230	246	246
Max Height Distance Between Outdoor to Indoor Units	Ft	33	33	49	49	49
Max Height Distance Between Indoor Units	Ft	33	33	24	24	24
Max Length Per Indoor Unit (Outdoor to Indoor Unit)	Ft	33	33	82	82	82

MULTI=MAX

Multi - Max Inverter Heat Pump Condenser 48K - 62K BTU



MULTI=MAX

For larger projects, this series of Multi-Max heat pump systems utilize the latest inverter technology to provide lower power consumption and quieter sound levels, while providing trouble free comfort. Multi-Max's 5-port or 5-port BU modules vary refrigerant volumes and allow one outdoor unit to connect to as few as 2 to a maximum of 8 (VOM0355H2RE508) or 9 zones (VOM0362H2RE509). The longer refrigerant line capabilities simplify system layout and offer much more flexibility locating indoor units.

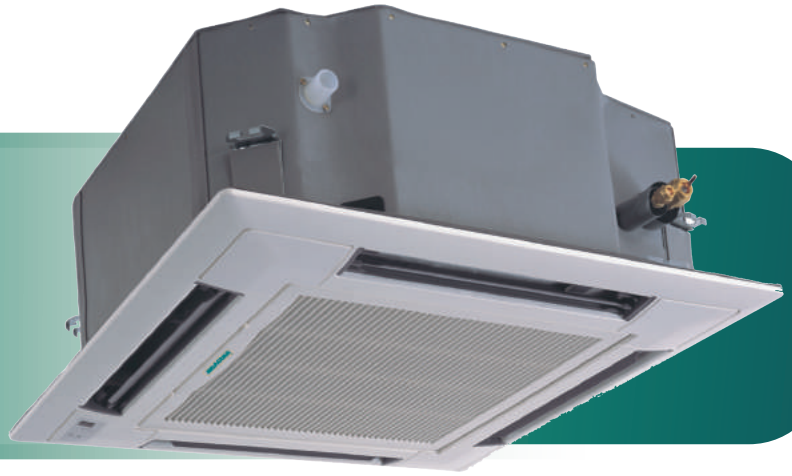
- 3 port or 5 port BU Modules
- Sound Levels down to 57 DB
- Low Ambient Cooling down to 5 deg F
- Piping Length up to 140ft (VOM0355H2RE508 model) and 475 ft (VOM0362H2RE509 model)
- Intelligent Defrost
- Multi-point Diagnostics
- R410A Refrigerant

BU Port Expander Modules					
Model		VOB5-3C (3 Port)		VOB5-5C (5 Port)	
Power supply		Ph/V/Hz	1Ph/208-230V/60Hz	1Ph/208-230V/60Hz	
Rated Current		A	3.15	3.15	
Dimension (WxDxH)	Unit	inch	14 x 12 x 7	24 x 16 x 7	
	Package	inch	18 x 16 x 11	27 x 18 x 11	
Connection Method		type	Flare	Flare	
No. of IDU can connected		units	3	5	
Net weight/Gross weight		lbs	12.1/16.5	13.3/17.5	
Connecting pipe diameter (to IDU)	Gas/Suction	inch(mm)	ϕ3/8(9.52)	ϕ3/8(9.52)	
	Liquid	inch(mm)	ϕ1/4(6.35)	ϕ1/4(6.35)	
Connecting pipe diameter (to ODU)	Gas/Suction	inch(mm)	ϕ5/8(15.9)	ϕ5/8(15.9)	
	Liquid	inch(mm)	ϕ3/8(9.52)	ϕ3/8(9.52)	
Max. Equivalent Connection Pipe Length (BU unit to Last Indoor)		ft	60	60	

Unidad exterior BC Inverter		VOM0355H2RE508		VOM0362H2RE509	
System Type		Heat Pump			
Cooling Capacity (Min-Max)	Btu/h	48,000(3,412-54,592)		53,000(3,412-61,416)	
Heating Capacity (Min-Max)	Btu/h	55,000(4,094-59,369)		62,000(4,094-63,122)	
Power Supply	Ph/V/Hz	1Ph/208-230V/60Hz		1Ph/208-230V/60Hz	
Rated Current - Cooling	Amps	23		25	
Rated Current - Heating	Amps	20		23	
Operation Range - Cooling	deg F	5-118		5-118	
Operation Range - Heating	deg F	-4-75		-4-75	
Compressor Type		DC Inverter-driven Twin rotary			
Sound Pressure Level	db (A)	57		57	
Unit Dimension (WxHxD)	inches	35 x 53 x 15		35 x 53 x 15	
Package Dimension (WxHxD)	inches	35 x 53 x 15		35 x 53 x 15	
Net/Gross Weight	lb	256 / 276		256 / 276	
Condenser Coil type		Copper/Aluminum with GOLD FIN Coating			
Max # Indoor Units	Units	8		9	
Refrigerant / Charge	oz.	R410A/174.64		R410A/174.64	
Piping Connections:					
	Liquid Port	inches	3/8"	3/8"	
	Suction/Gas Port	inches	5/8"	5/8"	
Pre-Charge Piping Length	Feet	98		98	
Additional Refrigerant charge	oz./ft	0.54		0.54	
Max. Total Piping Length (Ft.)	Feet	443		476	
Max. Equivalent Length (Outdoor to last Indoor Unit)	Feet	230		230	
Max. Elevation (Outdoorto Indoor Unit)	Feet	98		98	
MCA	Amps	30		30	
MOCP	Amps	50		50	



Ceiling Cassette



The Multi-Max Ceiling Cassette is suitable for any room, and can be easily installed in suspended ceilings with only a discreet discharge grille visible. The Ceiling Cassette is ideal for light commercial applications which require comfort control in large, open spaces. Each Ceiling Cassette can be operated by an infrared remote control or wired tether controller, allowing maximum flexibility for any application.

Features and Benefits:

- 4-way Discharge Air
- Multi Speed Fan
- Remote Control Lockout
- Swing Louver
- Power Failure Recovery
- IR Remote Control and Tether Wired Controller
- Decorative Discharge Air Grille (sold separately)
- Healthy Filter (Optional)
- Internal Condensate Drain Pump
- Sentry Float Switch
- Cleanable Air Filter
- Fresh Air Intake (24K model only)

Ceiling Cassette Indoor Unit		VCM13H25	VCM18H25	VCM25H25
System Type		Heat Pump		
Nominal Capacity - Cooling	Btu/h	12,000	16,000	23,000
Nominal Capacity - Heating	Btu/h	13,600	18,000	27,500
Power Supply	Ph/V/Hz	1Ph/208-230V/60Hz	1Ph/208-230V/60Hz	1Ph/208-230V/60Hz
Airflow- H/M/L	CFM	350/295/250	350/295/250	685/505/460
Moisture Removal	L/Hr	1.4	1.8	2.5
Sound Pressure Level - H/M/L	db (A)	46/44/42	46/44/42	39/37/35
Unit Dimension (WxHxD)	inches	22 ½ x 22 ½ x 9	22 ½ x 22 ½ x 9	33 x 33 x 9 ½
Package Dimension (WxHxD)	inches	33 ½ x 29 x 13	33 ½ x 29 x 13	38 x 38 x 13
Net/Gross Weight	lbs	40/51	40/51	62/77
Piping Connections (Gas/Suction)	inches	φ3/8	φ1/2	φ5/8
Piping Connections (Liquid)	inches	φ1/4	φ1/4	φ3/8
Panel				
Unit Dimension (WxHxD)	inches	25 ½ x 25 ½ x 2	25 ½ x 25 ½ x 2	37 ½ x 37 ½ x 2 ½
Package Dimension (WxHxD)	inches	29 x 26 ½ x 4 ½	29 x 26 ½ x 4 ½	41 x 40 ½ x 5
Net / Gross Weight	lbs	6/8	6/8	6.5/10

MULTI=MAX

Universal Floor/Ceiling



The Multi-Max Universal Floor/Ceiling indoor units are designed to be suspended from a ceiling or mounted low on a wall. The slender and lightweight design is perfect for restaurants or hallways where wall space is limited. The Universal Floor/Ceiling units are a great fit beneath windows, in public or light commercial applications. Each unit can be operated by an infrared remote control or wired tether controller to allow maximum flexibility in any application.

Features and Benefits:

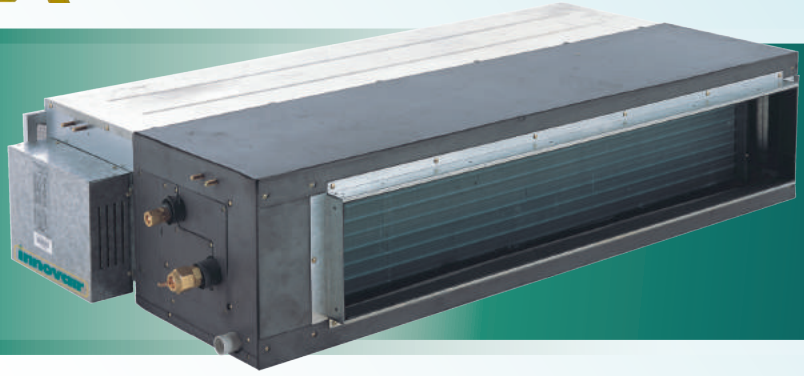
- 4-way Discharge Air
- Multi Speed Fan
- IR Remote Control and Tether Wired Controller
- Comfortable Sleep Mode
- Swing Louver
- Cleanable Air Filter
- Dry Coil mode for Anti -Mildew Protection
- Remote Control Lockout
- Power Failure Recovery

Floor/Ceiling Indoor Unit		VUM10H25	VUM13H25	VUM18H25	VUM24H25
System Type		Heat Pump			
Nominal Capacity - Cooling	Btu/h	8,000	12,000	17,000	23,000
Nominal Capacity - Heating	Btu/h	10,000	13,000	19,000	27,000
Power Supply	Ph/V/Hz	1Ph/208-230V/60Hz	1Ph/208-230V/60Hz	1Ph/208-230V/60Hz	1Ph/208-230V/60Hz
Airflow- H/M/L	CFM	380/325/265	380/325/265	560/415/295	740/530/415
Moisture Removal	L/Hr	0.8	1.4	1.8	2.5
Sound Pressure Level - H/M/L	db (A)	40/38/36	46/44/42	45/42/40	48/46/44
Unit Dimension (WxHxD)	inches	48 x 27 1/2 x 9	48 x 27 1/2 x 9	48 x 27 1/2 x 9	48 x 27 1/2 x 9
Package Dimension (WxHxD)	inches	53 x 32 x 12 1/2	53 x 32 x 12 1/2	53 x 32 x 12 1/2	53 x 32 x 12 1/2
Net/Gross Weight	lbs	88/110	88/110	88/110	100/120
Piping Connections (Gas/Suction)	inches	φ3/8	φ3/8	φ1/2	φ5/8
Piping Connections (Liquid)	inches	φ1/4	φ1/4	φ1/4	φ3/8



MULTI=MAX

Slim Duct Fan Coil



Compact and powerful, the Multi-Max Concealed Duct indoor units offer the ultimate in flexibility and discretion. These slim indoor units are designed to be concealed above suspended ceilings or within open closet spaces to deliver conditioned air via ducting and suitable ceiling or wall grilles. Each unit comes with an easy to operate wall mounted tether controller.

Features and Benefits:

- Medium Static Pressure Capability
- Slim Line Construction 7-7/8" high
- Flexible Return Air From Bottom Or Rear.
- Internal Condensate Drain Pump
- Sentry Float Switch
- Environmentally Safe R-410A Refrigerant

Slim Duct Indoor Unit		VTM10H25	VTM13H25	VTM18H25	VTM24H25
System Type		Heat Pump			
Nominal Capacity - Cooling	Btu/h	8,500	12,000	15,000	24,000
Nominal Capacity - Heating	Btu/h	10,000	13,000	19,000	27,000
Power Supply	Ph/V/Hz	1Ph/208-230V/60HzV	1Ph/208-230V/60Hz	1Ph/208-230V/60Hz	1Ph/208-230V/60Hz
Airflow- H/M/L	CFM	265/175/150	395/235/180	415/353/295	590/445/325
External Static Pressure	Pa	0-10	0-10	0-10	0-15
Moisture Removal	L/Hr	0.8	1.4	1.8	2.0
Sound Pressure Level - H/M/L	db (A)	37/31	39/32	41/33	42/43
Unit Dimension (WxHxD)	inches	27 ½ x 24 x 8	27 ½ x 24 x 8	35 ½ x 24 x 8	43 ½ x 24 x 8
Package Dimension (WxHxD)	inches	35 x 29 x 12	35 x 29 x 12	44 x 29 x 12	52 x 29 x 12
Net/Gross Weight	lbs	48.5/60	51/64	60/79	68/90
Piping Connections (Gas/Suction)	inches	φ3/8	φ3/8	φ1/2	φ5/8
Piping Connections (Liquid)	inches	φ1/4	φ1/4	φ1/4	φ3/8



Wall Mount

The Multi-Max Wall Mount is energy efficient, yet powerful enough to keep you comfortable all year round. Whisper quiet fan technology always you to have quiet comfort, without any distracting noise. Its attractive compact design mounts in a small amount of wall space near the ceiling, and fits seamlessly into any decor. The fully featured Wall Mount can be operated by an infrared remote control or a wired tether controller, allowing you to easily manage a variety of useful features to further enhance room comfort.

Features and Benefits:

- Four Fan Speeds
- IR Remote Controller
- Turbo Mode
- Comfortable Sleep Mode
- Vertical Swing Louver
- Cleanable Air Filter
- Dry Coil Mode for Anti-Mildew Protection
- Remote Control Lockout
- Power Failure Recovery
- Healthy Filter (Optional)
- Tether Wired Controller (Optional)

Multi Max Hi Wall Unit HP Inverter		VWM10H25B	VWM13H25B	VWM18H25B	VWM24H25B
System Type		Heat Pump			
Nominal Capacity - Cooling	Btu/h	9,000	12,000	18,000	22,000
Nominal Capacity - Heating	Btu/h	10,000	13,000	20,000	24,000
Power Supply	Ph/V/Hz	1Ph/208-230V/60Hz	1Ph/208-230V/60Hz	1Ph/208-230V/60Hz	1Ph/208-230V/60Hz
Airflow- H/M/L	CFM	306/277/218	335/277/218	500/459/324	585/490/415
Moisture Removal	L/Hr	0.8	1.2	1.8	2.5
Sound Pressure Level - H/M/L	db (A)	40/35/32	42/37/32	49/40/35	51/42/38
Unit Dimension (WxHxD)	inches	33 ¹ / ₄ x 11 x 7	33 ¹ / ₄ x 11 x 7	37 x 11 ³ / ₄ x 8	39 ¹ / ₂ x 12 ¹ / ₂ x 8 ¹ / ₂
Package Dimension (WxHxD)	inches	36 x 14 ¹ / ₂ x 10	36 x 14 ¹ / ₂ x 10	40 x 15 x 11 ¹ / ₂	42 ¹ / ₂ x 15 ¹ / ₂ x 13
Net/Gross Weight	lbs	24/31	24/31	29/37	35/46
Piping Connections (Gas/Suction)	inches	φ3/8	φ3/8	φ1/2	φ5/8
Piping Connections (Liquid)	inches	φ1/4	φ1/4	φ1/4	φ1/4



MATCHING COMBINATIONS AND CAPACITIES



VOM0522H7RE602 2 Combinations



Two Units	
9+9	9 + 12

VOM0733H7RE603 11 Combinations



Two Unit		Three Units	
9 + 9	9 + 12	9 + 9 + 9	9 + 12 + 12
9 + 18	12 + 12	9 + 9 + 12	12 + 12 + 12
12 + 18	18 + 18	9 + 9 + 18	

Please refer to our combination table to select the correct units matching for your project.

VOM0833H7RE604 20 Combinations



Two Units		Three Units		Four Units
9 + 9	12 + 18	9 + 9 + 9	9 + 12 + 12	9 + 9 + 9 + 9
9 + 12	12 + 24	9 + 9 + 12	9 + 12 + 18	9 + 9 + 9 + 12
9 + 18	18 + 18	9 + 9 + 18	12 + 12 + 12	9 + 9 + 12 + 12
9 + 24	18 + 24	9 + 9 + 24	12 + 12 + 18	
12 + 12				

MATCHING COMBINATIONS AND CAPACITIES

VOM0836H7RE605 31 Combinations



Two Units		Three Units		Four Units	Five Units
9 + 9	12 + 18	9 + 9 + 9	9 + 12 + 24	9 + 9 + 9 + 9	9 + 9 + 9 + 9 + 9
9 + 12	12 + 24	9 + 9 + 12	9 + 18 + 18	9 + 9 + 9 + 12	9 + 9 + 9 + 9 + 12
9 + 18	18 + 18	9 + 9 + 18	12 + 12 + 12	9 + 9 + 9 + 18	
9 + 24	18 + 24	9 + 9 + 24	12 + 12 + 18	9 + 9 + 12 + 12	
12 + 12	24 + 24	9 + 12 + 12	12 + 12 + 24	9 + 9 + 12 + 18	
		9 + 12 + 18	12 + 18 + 18	9 + 12 + 12 + 12	
				12 + 12 + 12 + 12	

VOM0847H7RE605 32 Combinations



Two Units		Three Units		Four Units		Five Units
9 + 9	12 + 18	9 + 9 + 9	9 + 12 + 24	9 + 9 + 9 + 9	9 + 9 + 12 + 18	9 + 9 + 9 + 9 + 9
9 + 12	12 + 24	9 + 9 + 12	9 + 18 + 18	9 + 9 + 9 + 12	9 + 12 + 12 + 12	9 + 9 + 9 + 9 + 12
9 + 18	18 + 18	9 + 9 + 18	12 + 12 + 12	9 + 9 + 9 + 18	9 + 12 + 12 + 18	
9 + 24	18 + 24	9 + 9 + 24	12 + 12 + 18	9 + 9 + 12 + 12	12 + 12 + 12 + 12	
12 + 12	24 + 24	9 + 12 + 12	12 + 12 + 24			
		9 + 12 + 18	12 + 12 + 18			

VOM0355H2RE508 90 Combinations



Two Units	Three Units		Four Units			Five Units		Six Units	Seven Units
9+18	9+9+9	12+12+12	9+9+9+9	9+12+12+12	12+12+12+18	9+9+9+9+9	9+9+12+12+24	9+9+9+9+9+9	9+9+9+9+9+9+9
9+24	9+9+12	12+12+18	9+9+9+12	9+12+12+18	12+12+12+24	9+9+9+9+12	9+9+12+18+18	9+9+9+9+9+12	9+9+9+9+9+9+12
12+12	9+9+18	12+12+24	9+9+9+18	9+12+12+24	12+12+18+18	9+9+9+9+18	9+9+12+18+24	9+9+9+9+9+18	9+9+9+9+9+9+18
12+18	9+9+24	12+18+18	9+9+9+24	9+12+18+18	12+12+18+24	9+9+9+9+24	9+12+12+12+12	9+9+9+9+9+24	9+9+9+9+9+12+12
12+24	9+12+12	12+18+24	9+9+12+12	9+12+18+24	12+12+24+24	9+9+9+12+12	9+12+12+12+18	9+9+9+9+12+12	9+9+9+9+12+12+12
18+18	9+12+18	12+24+24	9+9+12+18	9+12+24+24	12+18+18+18	9+9+9+12+18	9+12+12+12+24	9+9+9+9+12+18	
18+24	9+12+24	18+18+18	9+9+12+24	9+18+18+18	12+18+18+24	9+9+9+12+24	9+12+12+18+18	9+9+9+9+12+24	
24+24	9+18+18	18+18+24	9+9+18+18	9+18+18+24		9+9+9+18+18	12+12+12+12+12	9+9+9+12+12+12	
	9+18+24	24+24+24	9+9+18+24	12+12+12+12		9+9+9+18+24	12+12+12+12+18	9+9+9+12+12+18	
	9+24+24					9+9+12+12+12	12+12+12+12+24	9+9+12+12+12+12	
						9+9+12+12+18	12+12+12+18+18	9+9+12+12+12+18	



VOM0362H2RE509 131 Combinations

Two Units	Three Units			Four Units			
9 + 18	9 + 9 + 12	9 + 18 + 24	12 + 18 + 24	9 + 9 + 9 + 9	9 + 9 + 18 + 24	9 + 18 + 18 + 18	12 + 12 + 18 + 24
9 + 24	9 + 9 + 18	9 + 24 + 24	12 + 24 + 24	9 + 9 + 9 + 12	9 + 9 + 24 + 24	9 + 18 + 18 + 24	12 + 12 + 24 + 24
12 + 18	9 + 9 + 24	12 + 12 + 12	18 + 18 + 18	9 + 9 + 9 + 18	9 + 12 + 12 + 12	9 + 18 + 24 + 24	12 + 18 + 18 + 18
12 + 24	9 + 12 + 12	12 + 12 + 18	18 + 18 + 24	9 + 9 + 9 + 24	9 + 12 + 12 + 18	9 + 24 + 24 + 24	12 + 18 + 18 + 24
18 + 18	9 + 12 + 18	12 + 12 + 24	18 + 24 + 24	9 + 9 + 12 + 12	9 + 12 + 12 + 24	12 + 12 + 12 + 12	12 + 18 + 24 + 24
18 + 24	9 + 12 + 24	12 + 18 + 18	24 + 24 + 24	9 + 9 + 12 + 18	9 + 12 + 18 + 18	12 + 12 + 12 + 18	18 + 18 + 18 + 18
24 + 24	9 + 18 + 18			9 + 9 + 12 + 24	9 + 12 + 18 + 24	12 + 12 + 12 + 24	18 + 18 + 18 + 24
				9 + 9 + 12 + 24	9 + 12 + 24 + 24	12 + 12 + 18 + 18	

Five Units			Six Units		
9 + 9 + 9 + 9 + 9	9 + 9 + 12 + 12 + 18	9 + 12 + 12 + 18 + 18	9 + 9 + 9 + 9 + 9 + 9	9 + 9 + 9 + 12 + 12 + 12	9 + 9 + 12 + 12 + 18 + 18
9 + 9 + 9 + 9 + 12	9 + 9 + 12 + 12 + 24	9 + 12 + 12 + 18 + 24	9 + 9 + 9 + 9 + 9 + 12	9 + 9 + 9 + 12 + 12 + 18	9 + 12 + 12 + 12 + 12 + 12
9 + 9 + 9 + 9 + 18	9 + 9 + 12 + 18 + 18	9 + 12 + 12 + 24 + 24	9 + 9 + 9 + 9 + 9 + 18	9 + 9 + 9 + 12 + 12 + 24	9 + 12 + 12 + 12 + 12 + 18
9 + 9 + 9 + 9 + 24	9 + 9 + 12 + 18 + 24	12 + 12 + 12 + 12 + 12	9 + 9 + 9 + 9 + 9 + 24	9 + 9 + 9 + 12 + 18 + 18	9 + 12 + 12 + 12 + 12 + 24
9 + 9 + 9 + 12 + 12	9 + 9 + 12 + 24 + 24	12 + 12 + 12 + 12 + 18	9 + 9 + 9 + 9 + 12 + 12	9 + 9 + 9 + 12 + 18 + 24	9 + 12 + 12 + 12 + 18 + 18
9 + 9 + 9 + 12 + 18	9 + 9 + 18 + 18 + 18	12 + 12 + 12 + 12 + 24	9 + 9 + 9 + 9 + 12 + 18	9 + 9 + 12 + 12 + 12 + 12	12 + 12 + 12 + 12 + 12 + 12
9 + 9 + 9 + 12 + 24	9 + 9 + 18 + 18 + 24	12 + 12 + 12 + 18 + 18	9 + 9 + 9 + 9 + 12 + 24	9 + 9 + 12 + 12 + 12 + 18	12 + 12 + 12 + 12 + 12 + 18
9 + 9 + 9 + 18 + 18	9 + 12 + 12 + 12 + 12	12 + 12 + 12 + 18 + 24	9 + 9 + 9 + 9 + 18 + 18	9 + 9 + 12 + 12 + 12 + 24	
9 + 9 + 9 + 18 + 24	9 + 12 + 12 + 12 + 18	12 + 12 + 18 + 18 + 18	9 + 9 + 9 + 9 + 18 + 24		
9 + 9 + 12 + 12 + 12	9 + 12 + 12 + 12 + 24				

Seven Units	Eight Units	Nine Units
	9 + 9 + 9 + 9 + 9 + 18 + 18	9 + 9 + 9 + 9 + 9 + 9 + 9
	9 + 9 + 9 + 9 + 12 + 12 + 12	
9 + 9 + 9 + 9 + 9 + 9 + 9	9 + 9 + 9 + 9 + 12 + 12 + 18	
9 + 9 + 9 + 9 + 9 + 9 + 12	9 + 9 + 9 + 9 + 9 + 12 + 12	
9 + 9 + 9 + 9 + 9 + 9 + 18	9 + 9 + 9 + 9 + 12 + 12 + 18	
9 + 9 + 9 + 9 + 9 + 9 + 24	9 + 9 + 12 + 12 + 12 + 12 + 12	
9 + 9 + 9 + 9 + 9 + 12 + 12	9 + 12 + 12 + 12 + 12 + 12 + 12	
9 + 9 + 9 + 9 + 9 + 12 + 18		
9 + 9 + 9 + 9 + 9 + 12 + 24		



 **innovair**®
innovative ideas in air conditioning

Connect with us on



www.innovair.com

INNMMX3618